

Fuel Pressure Regulator Mini 2

www.bosch-motorsport.com



- ▶ 5 to 10 bar
- ▶ All versions Methanol compatible
- ▶ 30 to 400 l/h reflow
- ▶ Adjusted at 105 l/h
- ▶ Aluminum housing

Fuel pressure regulators are used to maintain constant fuel pressure at the injection valves.

We offer this regulator for gasoline as well as for methanol applications.

The main benefit of this regulator includes a higher pressure range and a higher return flow rate in comparison to the production type regulators.

Application

Pressure range	See ordering information
Reflow quantity	30 to 400 l/h
Fuel compatibility	Gasoline, E85, M100
Operating temperature	-40 to 120°C
Storage temperature	-40 to 100°C
Max. vibration	<600 m/s ² at 5 to 250 Hz

Technical Specifications

Variations

Please see Ordering Information

Mechanical Data

Diameter	38.1+0.1-0.2 mm
Weight	Ca. 61 g
Mounting	Fastening with a clip

Connectors and Wires

Connector supply	Diam. 25 mm, O-ring 25x2.5
Connector reflow	Diam. 9.1 mm, O-ring 5x2.5

Installation Notes

Never run the regulator without the integrated filter.

Please oil O-rings lightly with clean and silicone free engine oil before you install the regulator.

Please make a leak test after you have installed the regulator.

When the pressure regulator is removed and will be reused, the O-rings must be tested for fractures.

Operation of the pressure regulator with a medium other than gasoline is not allowed.

Using the FPR Adaptor light F 02U V02 248-01, you can rebuild the regulator an inline type.

This pressure regulator is not designed for in-tank mounting.

Ordering Information

Fuel Pressure Regulator Mini 2
 Pressure Range 5.0 bar
 Order number **F 02U V02 166-01**

Fuel Pressure Regulator Mini 2
 Pressure Range 5.5 bar
 Order number **F 02U V02 167-01**

Fuel Pressure Regulator Mini 2
 Pressure Range 6.0 bar
 Order number **F 02U V02 168-01**

Fuel Pressure Regulator Mini 2
 Pressure Range 6.5 bar
 Order number **F 02U V02 169-01**

Fuel Pressure Regulator Mini 2
 Pressure Range 7.0 bar
 Order number **F 02U V02 170-01**

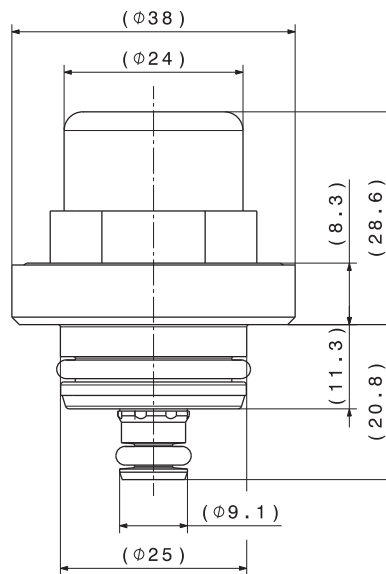
Fuel Pressure Regulator Mini 2
 Pressure Range 8.0 bar
 Order number **F 02U V02 171-01**

Fuel Pressure Regulator Mini 2
 Pressure Range 10.0 bar
 Order number **F 02U V02 172-01**

Accessories

FPR Adaptor light
 Order number **F 02U V02 248-01**

Dimensions



Complete dimensions on offer drawing at www.bosch-motorsport.com

Represented by:

Europe:
 Bosch Engineering GmbH
 Motorsport
 Robert-Bosch-Allee 1
 74232 Abstatt
 Germany
 Tel.: +49 7062 911 9101
 Fax: +49 7062 911 79104
motorsport@bosch.com
www.bosch-motorsport.de

North America:
 Bosch Engineering North America
 Motorsport
 38000 Hills Tech Drive
 Farmington Hills, MI 48331-3417
 United States of America
 Tel.: +1 248 876 2977
 Fax: +1 248 876 7373
motorsport@bosch.com
www.bosch-motorsport.com

Latin America:
 Robert Bosch Ltda
 Motorsport
 Av Juscelino Kubitscheck de
 Oliveira 11800
 Zip code 81460-900
 Curitiba - Parana
 Brasilia
 Tel.: +55 41 3341 2057
 Fax: +55 41 3341 2779

Asia-Pacific:
 Bosch Engineering Japan K.K.
 Motorsport
 18F Queen's Tower C, 2-3-5 Minato Riai
 Nishi-ku, Yokohama-shi
 Kanagawa 220-6218
 Japan
 Tel.: +81 45 650 5610
 Fax: +81 45 650 5611
www.bosch-motorsport.jp

Australia, New Zealand and South Africa:
 Robert Bosch Pty. Ltd
 Motorsport
 1555 Centre Road
 Clayton, Victoria, 3168
 Australia
 Tel.: +61 (3) 9541 3901
motor.sport@au.bosch.com